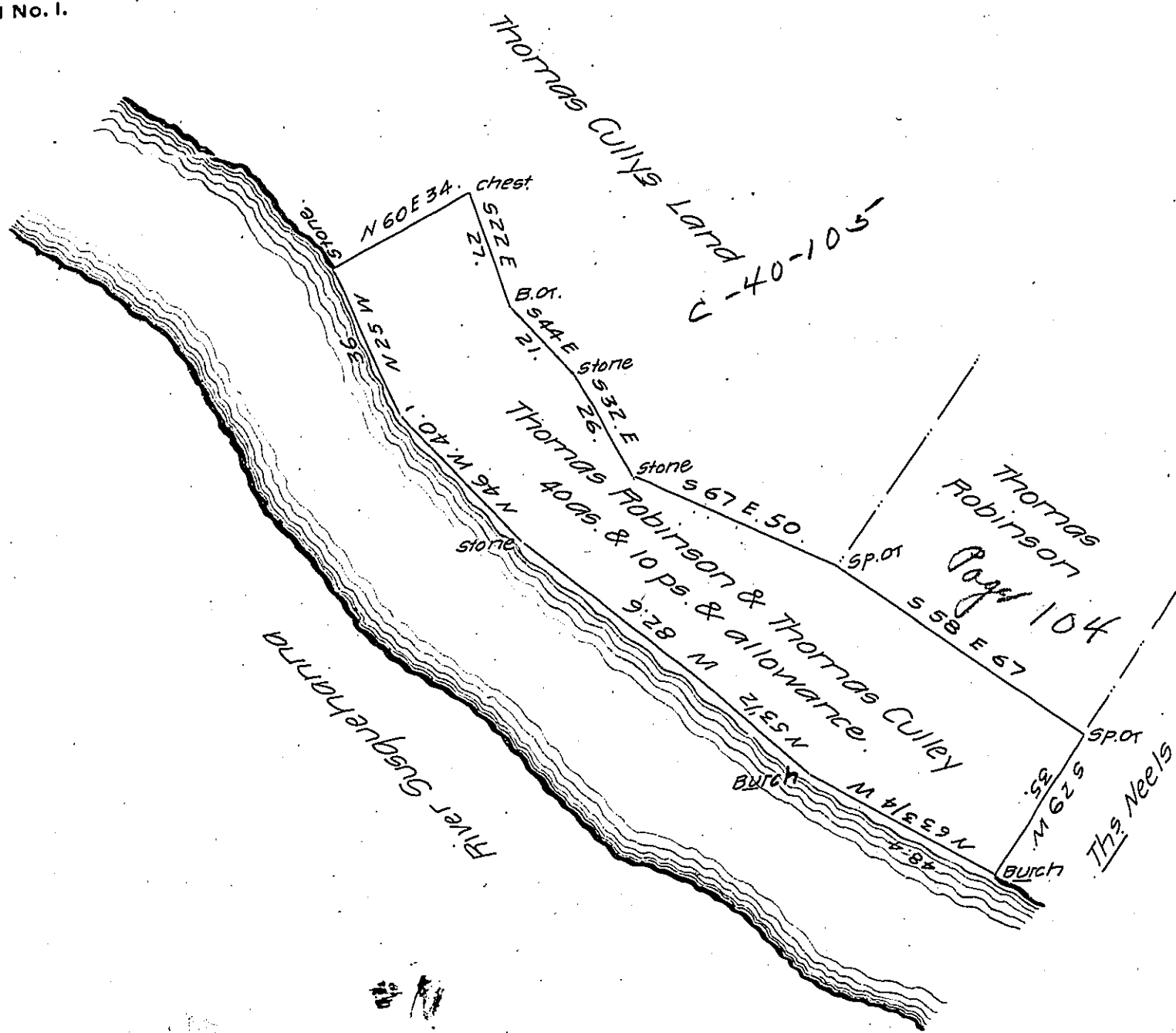


FORM No. 1.



A Draught of a Tract of Land situate in Martick Township Lancaster County containing 40 acs. & 10 ps. and the usual allow. of six pr. cent for Roads &c. Surveyed the 19th day of August A.D. 1795 for Thomas Robinson & Thomas Culley by virtue of a Warrant dated the 14th day of May A.D. 1794.

Pr.

H. Pearm. D.S.

To Daniel Brodhead Esq.
Surveyor General.

I do hereby Certify that I have examined the above return and find it to be correct. August the 23rd A.D. 1809.

To Andrew Porter Esq.
Surveyor General.

Pr. Jacob Hibshman D.S.

IN TESTIMONY that the above is a copy of the original remaining on file in the Department of Internal Affairs of Pennsylvania, made conformably to an Act of Assembly approved the 16th day of February, 1833, I have hereunto set my Hand and caused the Seal of said Department to be affixed at Harrisburg, this thirty-first day of July 1906

Geo. B. Johnson
Secretary of Internal Affairs